
Product Datasheet

Keratin 6 Antibody / Cytokeratin 6 (orb750218)

Description

In humans, multiple isoforms of Cytokeratin 6 (6A-

h...

Species/Host

Mouse

Reactivity

Human, Mouse

Conjugation

Unconjugated

Tested Applications

FACS, IF, IHC-P

Immunogen

Amino acids GSSTIKYTTTS from the C-terminus of human keratin 6 was used as the immunogen for this Cytokeratin 6 antibody.

Preservatives

0.2 mg/ml in 1X PBS with 0.1 mg/ml rAlbumin (US sourced) and 0.05% sodium azide

Storage

Store the Cytokeratin 6 antibody at 2-8°C (with azide) or aliquot and store at -20°C or colder (without azide).

Note

For research use only

Application notes

Optimal dilution of the antibody should be determined by the researcher.

Formula

0.2 mg/ml in 1X PBS with 0.1 mg/ml BSA (US sourced) and 0.05% sodium azide

Isotype

Mouse IgG2a, kappa

Clonality

Monoclonal

Purity

Protein G affinity chromatography

Uniprot ID

P48668, P04259, P02538

Hazard Information

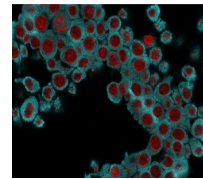
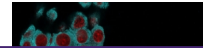
This Cytokeratin 6 antibody is available for research use only.

Dilution Range

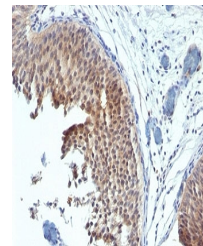
Flow cytometry: 1-2ug/million cells, Immunofluorescence: 1-2ug/ml, Immunohistochemistry (FFPE): 1-2ug/ml for 30 min at RT

Expiration Date

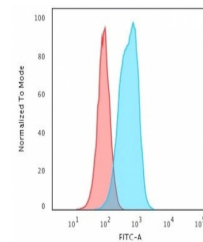
12 months from date of receipt.



Immunofluorescent staining of fixed mouse...



IHC: Formalin-fixed, paraffin-embedded h...



Flow cytometry testing of fixed mouse RA...