
Product Datasheet

HSP27 Antibody / HSPB1 (orb750207)

Description

It recognizes a 24-27kDa estrogen-regulated protein,


Species/Host

Mouse

Reactivity

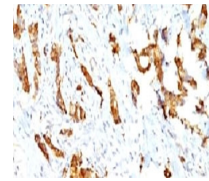
Human

Conjugation

Unconjugated

Tested Applications

FACS, IF, IHC-P, WB



IHC: Formalin-fixed, paraffin-embedded h...

Immunogen

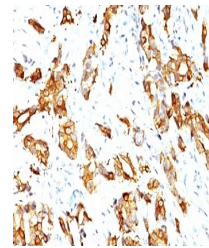
Partially purified HSP27 protein from the human breast cancer cell line MCF-7 was used as the immunogen for this HSP27 antibody.

Preservatives

0.2 mg/ml in 1X PBS with 0.1 mg/ml rAlbumin (US sourced) and 0.05% sodium azide

Storage

Store the HSP27 antibody at 2-8°C (with azide) or aliquot and store at -20°C or colder (without azide).



IHC: Formalin-fixed, paraffin-embedded h...

Note

For research use only

Application notes

Optimal dilution of the antibody should be determined by the researcher.

Formula

0.2 mg/ml in 1X PBS with 0.1 mg/ml BSA (US sourced) and 0.05% sodium azide

Isotype

Mouse IgG1, kappa

Clonality

Monoclonal

Purity

Protein G affinity chromatography

Uniprot ID

P04792



Immunofluorescent staining of PFA-fixed ...

Hazard Information

This HSP27 antibody is available for research use only.

Dilution Range

Flow cytometry: 1-2ug/million cells, Immunofluorescence: 1-2ug/ml, Western blot: 1-2ug/ml, Immunohistochemistry (FFPE): 1-2ug/ml for 30 min at RT

Expiration Date

12 months from date of receipt.