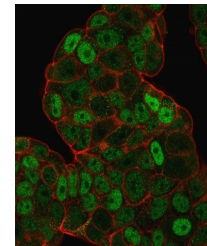


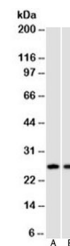
Product Datasheet

p27 Antibody / p27Kip1 (orb750185)

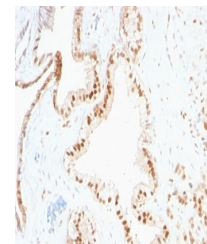
Description	This mAb recognizes a 27kDa protein, identified as the p27Kip1, a cell cycle regulatory mitotic inhi...
Species/Host	Mouse
Reactivity	Human
Conjugation	Unconjugated
Tested Applications	IF, IHC-P, WB
Immunogen	Mouse p27Kip1 protein was used as the immunogen for this p27 antibody.
Preservatives	0.2 mg/ml in 1X PBS with 0.1 mg/ml rAlbumin (US sourced) and 0.05% sodium azide
Storage	Store the p27Kip1 antibody at 2-8°C (with azide) or aliquot and store at -20°C or colder (without azide).
Note	For research use only
Application notes	Optimal dilution of the antibody should be determined by the researcher.
Formula	0.2 mg/ml in 1X PBS with 0.1 mg/ml BSA (US sourced) and 0.05% sodium azide
Isotype	Mouse IgG1, kappa
Clonality	Monoclonal
Purity	Protein G affinity chromatography
Uniprot ID	P46527
Hazard Information	This p27Kip1 antibody is available for research use only.
Dilution Range	Western blot: 1-2ug/ml, Immunofluorescence: 1-2ug/ml, Immunohistochemistry (FFPE): 1-2ug/ml for 30 min at RT
Expiration Date	12 months from date of receipt.



Immunofluorescent staining of PFA fixed ...



Western blot testing of human
A) HeLa an...



IHC analysis of formalin-fixed, paraffin...