
Product Datasheet

EpCAM Antibody (orb750183)

Description

Ep-CAM may act as a physical homophilic interaction


Species/Host

Rabbit

Reactivity

Human

Conjugation

Unconjugated

Tested Applications

FACS, IF, IHC-P

Immunogen

Human protein was used as the immunogen for the recombinant Ep-CAM antibody.

Preservatives

0.2 mg/ml in 1X PBS with 0.1 mg/ml rAlbumin (US sourced) and 0.05% sodium azide

Storage

Store the recombinant Ep-CAM antibody at 2-8°C (with azide) or aliquot and store at -20°C or colder (without azide).

Note

For research use only

Application notes

Titering of the recombinant Ep-CAM antibody may be required for optimal performance.1. The prediluted format is supplied in a dropper bottle and is optimized for use in IHC. After epitope retrieval step (if required), drip mAb solution onto the tissue section and incubate at RT for 30 min.

Formula

0.2 mg/ml in 1X PBS with 0.1 mg/ml BSA (US sourced) and 0.05% sodium azide

Isotype

Rabbit IgG, kappa

Clonality

Recombinant

Purity

Protein A affinity chromatography

Uniprot ID

P16422

Hazard Information

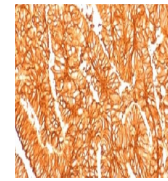
This recombinant Ep-CAM antibody is available for research use only.

Dilution Range

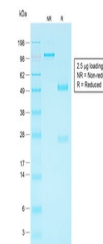
Flow cytometry: 1-2ug/million cells, Immunofluorescence: 1-2ug/ml, Immunohistochemistry (FFPE): 0.5-1ug/ml for 30 min at RT

Expiration Date

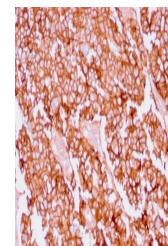
12 months from date of receipt.



IHC testing of FFPE human colon carcinom...



SDS-PAGE analysis of purified, BSA-free ...



IHC testing of FFPE human ovary tissue a...