
Product Datasheet

WT1 Antibody / Wilms Tumor 1 (orb750181)

Description

Wilms tumor is associated with mutations of WT1, a


Species/Host

Rabbit

Reactivity

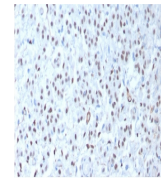
Human, Rat

Conjugation

Unconjugated

Tested Applications

IHC-P



IHC testing of FFPE human mesothelioma t...

Immunogen

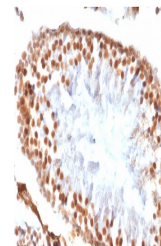
A recombinant protein was used as the immunogen for the recombinant WT1 antibody.

Preservatives

0.2 mg/ml in 1X PBS with 0.1 mg/ml rAlbumin (US sourced) and 0.05% sodium azide

Storage

Store the recombinant WT1 antibody at 2-8°C (with azide) or aliquot and store at -20°C or colder (without azide).



IHC testing of FFPE rat testis tissue wi...

Note

For research use only

Application notes

Optimal dilution of the recombinant WT1 antibody should be determined by the researcher.1. The prediluted format is supplied in a dropper bottle and is optimized for use in IHC. After epitope retrieval step (if required), drip mAb solution onto the tissue section and incubate at RT for 30 min.

Formula

0.2 mg/ml in 1X PBS with 0.1 mg/ml BSA (US sourced) and 0.05% sodium azide

Isotype

Rabbit IgG, kappa

Clonality

Recombinant

Purity

Protein A affinity chromatography

Uniprot ID

P19544

Hazard Information

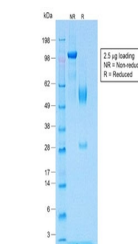
This recombinant WT1 antibody is available for research use only.

Dilution Range

Immunohistochemistry (FFPE): 1-2ug/ml for 30 min at RT

Expiration Date

12 months from date of receipt.



SDS-PAGE analysis of purified, BSA-free ...