
Product Datasheet

CA19-9 Antibody (orb750179)

Description

CA19-9, a carbohydrate epitope expressed on a high MW


Species/Host

Rabbit

Reactivity

Human

Conjugation

Unconjugated

Tested Applications

IHC-P

Immunogen

Purified human protein used as the immunogen for the recombinant CA19-9 antibody.

Preservatives

0.2 mg/ml in 1X PBS with 0.1 mg/ml rAlbumin (US sourced) and 0.05% sodium azide

Storage

Store the recombinant CA19-9 antibody at 2-8°C (with azide) or aliquot and store at -20°C or colder (without azide).

Note

For research use only

Application notes

Optimal dilution of the recombinant CA19-9 antibody should be determined by the researcher.1. The prediluted format is supplied in a dropper bottle and is optimized for use in IHC. After epitope retrieval step (if required), drip mAb solution onto the tissue section and incubate at RT for 30 min.

Formula

0.2 mg/ml in 1X PBS with 0.1 mg/ml BSA (US sourced) and 0.05% sodium azide

Isotype

Rabbit IgG, kappa

Clonality

Recombinant

Purity

Protein A affinity

Uniprot ID

Not Known

Hazard Information

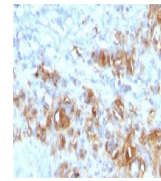
This recombinant CA19-9 antibody is available for research use only.

Dilution Range

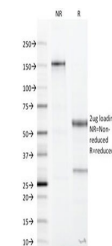
Immunohistochemistry (FFPE): 5-10ug/ml for 30 min at RT

Expiration Date

12 months from date of receipt.



IHC testing of FFPE human gastric carcin...



SDS-PAGE Analysis of Purified, BSA-Free ...