
Product Datasheet

Topoisomerase II alpha Antibody / TOP2A (orb750178)

Description

This mAb recognizes a 170kDa protein which is



cross-re...

Species/Host

Mouse

Reactivity

Human

Conjugation

Unconjugated

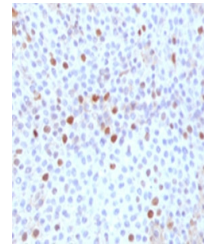
Tested Applications

IF, IHC, WB

IHC testing of FFPE human tonsil with TO...

Immunogen

Human recombinant partial protein (amino acids 1352-1493) was used as the immunogen for this TOP2A antibody.



IHC testing of FFPE human bladder carcin...

Preservatives

0.2 mg/ml in 1X PBS with 0.1 mg/ml rAlbumin (US sourced) and 0.05% sodium azide

Storage

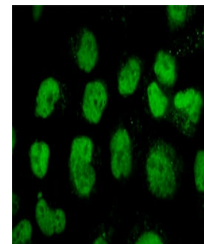
Store the TOP2A antibody at 2-8°C (with azide) or aliquot and store at -20°C or colder (without azide).

Note

For research use only

Application notes

The concentration stated for each application is a general starting point. Variations in protocols, secondaries and substrates may require the TOP2A antibody to be titrated up or down for optimal performance.1. Staining of FFPE tissue requires boiling sections in pH 9 10mM Tris with 1mM EDTA for 10-20 min followed by cooling at RT for 20 min.



Immunofluorescent staining of PFA-fixed ...

Formula

0.2 mg/ml in 1X PBS with 0.1 mg/ml BSA (US sourced) and 0.05% sodium azide

Isotype

Mouse IgG2b, kappa

Clonality

Monoclonal

Purity

Protein G affinity chromatography

Uniprot ID

[P11388](#)

Hazard Information

This TOP2A antibody is available for research use only.

Entrez

[7153](#)

Dilution Range

Immunofluorescence: 1-2ug/ml, Western blot: 1-2ug/ml, Immunohistochemistry (FFPE): 1-2ug/ml (1)

Expiration Date

12 months from date of receipt.