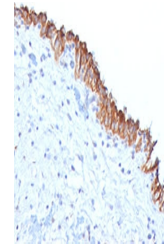


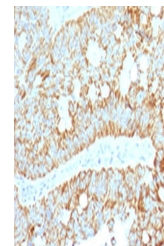
Product Datasheet

MAML2 Antibody (orb750175)

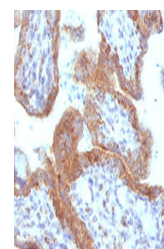
Description	Mastermind-like 2, also known as MAM2, MAM3 or MLLMAML2, is a nuclear speckle protein that acts as a...
Species/Host	Mouse
Reactivity	Human
Conjugation	Unconjugated
Tested Applications	IHC-P
Immunogen	A human recombinant protein was used as the immunogen for this MAML2 antibody.
Preservatives	0.2 mg/ml in 1X PBS with 0.1 mg/ml rAlbumin (US sourced) and 0.05% sodium azide
Storage	Store the MAML2 antibody at 2-8°C (with azide) or aliquot and store at -20°C or colder (without azide).
Note	For research use only
Application notes	The concentration stated for each application is a general starting point. Variations in protocols, secondaries and substrates may require the MAML2 antibody to be titered up or down for optimal performance.
Formula	0.2 mg/ml in 1X PBS with 0.1 mg/ml BSA (US sourced) and 0.05% sodium azide
Isotype	Mouse IgG2a, kappa
Clonality	Monoclonal
Purity	Protein G affinity chromatography
Hazard Information	This MAML2 antibody is available for research use only.
Entrez	84441
Dilution Range	Immunohistochemistry (FFPE): 1-2ug/ml
Expiration Date	12 months from date of receipt.



IHC testing of FFPE human bladder carcin...



IHC testing of FFPE human colon carcinom...



IHC testing of FFPE human placenta with ...