
Product Datasheet

CFTR Antibody / Cystic Fibrosis Transmembrane Regulator (orb750168)

Description

Cystic fibrosis transmembrane conductance



spanning doma...

Species/Host

Mouse

Reactivity

Human

Conjugation

Unconjugated

Tested Applications

IHC-P

IHC testing of FFPE human pancreas with ...

Immunogen

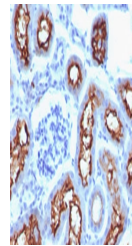
Human recombinant protein was used as the immunogen for this CFTR antibody.

Preservatives

0.2 mg/ml in 1X PBS with 0.1 mg/ml rAlbumin (US sourced) and 0.05% sodium azide

Storage

Store the CFTR antibody at 2-8°C (with azide) or aliquot and store at -20°C or colder (without azide).


Note

For research use only

Application notes

The concentration stated for each application is a general starting point. Variations in protocols, secondaries and substrates may require the CFTR antibody to be titered up or down for optimal performance.

IHC testing of FFPE mouse kidney with CF...

Formula

0.2 mg/ml in 1X PBS with 0.1 mg/ml BSA (US sourced) and 0.05% sodium azide

Isotype

Mouse IgG2a, kappa

Clonality

Monoclonal

Purity

Protein G affinity chromatography

Uniprot ID
P13569
Hazard Information

This CFTR antibody is available for research use only.

Dilution Range

Immunohistochemistry (FFPE): 1-2ug/ml for 30 min at RT

Expiration Date

12 months from date of receipt.