

Product Datasheet

CD31 Antibody / PECAM-1 (orb750167)

Description

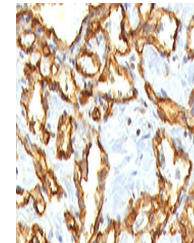
CD31 is found on the surface of platelets, monocytes,

Species/Host	Rabbit
Reactivity	Human
Conjugation	Unconjugated
Tested Applications	FACS, IHC-P, WB
Immunogen	A full length recombinant human protein was used as the immunogen for the recombinant CD31 antibody.
Preservatives	0.2 mg/ml in 1X PBS with 0.1 mg/ml rAlbumin (US sourced) and 0.05% sodium azide
Storage	Store the recombinant CD31 antibody at 2-8°C (with azide) or aliquot and store at -20°C or colder (without azide).
Note	For research use only
Application notes	Titering of the recombinant CD31 antibody may be required for optimal performance.1. The prediluted format is supplied in a dropper bottle and is optimized for use in IHC. After epitope retrieval step (if required), drip mAb solution onto the tissue section and incubate at RT for 30 min.
Formula	0.2 mg/ml in 1X PBS with 0.1 mg/ml BSA (US sourced) and 0.05% sodium azide
Isotype	Rabbit IgG, kappa
Clonality	Recombinant
Purity	Protein A affinity
Hazard Information	This recombinant CD31 antibody is available for research use only.
Entrez	5175
Dilution Range	Western blot: 1-2ug/ml,Flow cytometry: 1-2ug/million cells,Immunohistochemistry (FFPE): 1-2ug/ml for 30 min at RT,Prediluted IHC only format: incubate for 30 min at RT (1)
Expiration Date	12 months from date of receipt.

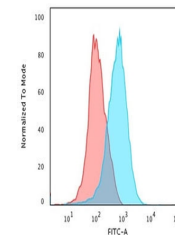


Western blot testing of human ThP1 cell

...



IHC staining of FFPE human angiocarcinom...



Flow cytometry testing of PFA-fixed huma...