

---

## Product Datasheet

### CD63 Antibody / LAMP-3 (orb750162)

**Description**

CD63 functions as cell surface receptor for TIMP1 and

**Species/Host**

Mouse

**Reactivity**

Human

**Conjugation**

Unconjugated

**Tested Applications**

FACS, IHC-P

**Immunogen**

Recombinant human full-length protein was used as the immunogen for the CD63 antibody.

**Preservatives**

0.2 mg/ml in 1X PBS with 0.1 mg/ml rAlbumin (US sourced) and 0.05% sodium azide

**Storage**

Store the CD63 antibody at 2-8°C (with azide) or aliquot and store at -20°C or colder (without azide).

**Note**

For research use only

**Application notes**

Titration of the CD63 antibody may be required for optimal performance. 1. 2. The prediluted format is supplied in a dropper bottle and is optimized for use in IHC. After epitope retrieval step (if required), drip mAb solution onto the tissue section and incubate at RT for 30 min.

**Formula**

0.2 mg/ml in 1X PBS with 0.1 mg/ml BSA (US sourced) and 0.05% sodium azide

**Isotype**

Mouse IgG2a, kappa

**Clonality**

Monoclonal

**Purity**

Protein G affinity chromatography

**Uniprot ID**

**P08962**

**Hazard Information**

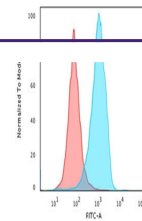
This CD63 antibody is available for research use only.

**Dilution Range**

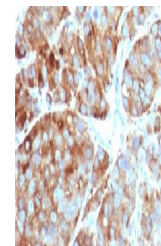
Flow cytometry: 0.5-1ug/million cells in 0.1ml, Immunohistochemistry (FFPE): 1-2ug/ml for 30 min at RT (1), Prediluted IHC only format: incubate for 30 min at RT (2)

**Expiration Date**

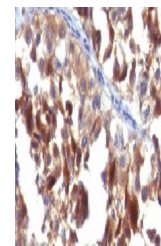
12 months from date of receipt.



Flow cytometry testing of PFA-fixed huma...



IHC testing of FFPE human prostate carci...



IHC testing of FFPE human melanoma with ...