

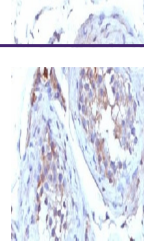
---

## Product Datasheet

### SHBG Antibody (Sex Hormone Binding Globulin) (orb750151)

**Description**

Sex Hormone Binding Globulin, also called Androgen


**Species/Host**

Mouse

**Reactivity**

Human

**Conjugation**

Unconjugated

**Tested Applications**

IHC-P

IHC testing of FFPE human testicular car...

**Immunogen**

Recombinant full-length human protein was used as the immunogen for the SHBG antibody.

**Preservatives**

0.2 mg/ml in 1X PBS with 0.1 mg/ml rAlbumin (US sourced) and 0.05% sodium azide

**Storage**

Store the SHBG antibody at 2-8°C (with azide) or aliquot and store at -20°C or colder (without azide).

**Note**

For research use only

**Application notes**

Optimal dilution of the SHBG antibody should be determined by the researcher.1. The prediluted format is supplied in a dropper bottle and is optimized for use in IHC. After epitope retrieval step (if required), drip mAb solution onto the tissue section and incubate at RT for 30 min.

**Formula**

0.2 mg/ml in 1X PBS with 0.1 mg/ml BSA (US sourced) and 0.05% sodium azide

**Isotype**

Mouse IgG1

**Clonality**

Monoclonal

**Purity**

Protein G affinity chromatography

**Uniprot ID**
**P04278**
**Hazard Information**

This SHBG antibody is available for research use only.

**Dilution Range**

Immunofluorescence: 0.5-1ug/ml, Immunohistochemistry (FFPE): 1-2ug/ml for 30 min at RT (1), Prediluted IHC only format: incubate for 30 min at RT (2)

**Expiration Date**

12 months from date of receipt.