

---

## Product Datasheet

### Estrogen Receptor beta Antibody (orb750130)

**Description**

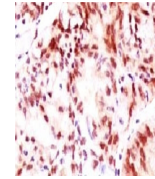
Estrogen receptors (ER) are members of the



ac...

**Species/Host**

Mouse


**Reactivity**

Human

**Conjugation**

Unconjugated

**Tested Applications**

FACS, IHC, WB

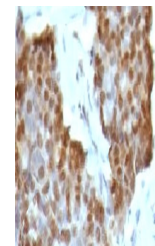
IHC testing of ovarian cancer stained wi...

**Immunogen**

The C-terminus fragment of recombinant human Estrogen Receptor beta protein was used as the immunogen for this antibody.

**Preservatives**

0.2 mg/ml in 1X PBS with 0.1 mg/ml rAlbumin (US sourced) and 0.05% sodium azide



IHC testing of gastric carcinoma stained...

**Storage**

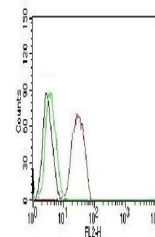
Store the Estrogen receptor beta antibody at 2-8°C (with azide) or aliquot and store at -20°C or colder (without azide).

**Note**

For research use only

**Application notes**

The concentration stated for each application is a general starting point. Variations in protocols, secondaries and substrates may require the Estrogen Receptor beta antibody to be titrated up or down for optimal performance.1. Staining of formalin-fixed tissues requires boiling tissue sections in pH 9 10mM Tris with 1mM EDTA for 10-20 min followed by cooling at RT for 20 minutes.2. The prediluted format is supplied in a dropper bottle and is optimized for use in IHC. After epitope retrieval step (if required), drip mAb solution onto the tissue section and incubate at RT for 30 min.



FACS testing of human MCF-7 cells: Black...

**Formula**

0.2 mg/ml in 1X PBS with 0.1 mg/ml BSA (US sourced) and 0.05% sodium azide

**Isotype**

Mouse IgG2a, kappa

**Clonality**

Monoclonal

**Purity**

Protein G purified

**Hazard Information**

This Estrogen Receptor beta antibody is available for research use only.

**Entrez**

**2100**

**Dilution Range**

Flow cytometry: 1-2ug/million cells,Western blot: 1-2ug/ml,Immunohistochemistry (FFPE): 1-2ug/ml for 30 min at RT (1),Prediluted IHC only format: incubate for 30 min at RT (2)