

---

## Product Datasheet

### PCNA Antibody (orb750109)

**Description**

Proliferating cell nuclear antigen is an auxiliary protein of


**Species/Host**

Mouse

**Reactivity**

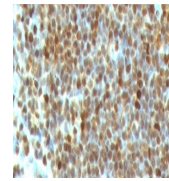
Human

**Conjugation**

Unconjugated

**Tested Applications**

FACS, IHC-P, WB



Formalin-fixed, paraffin-embedded human ...

**Immunogen**

Recombinant proliferating cell nuclear antigen was used as the immunogen for the PCNA antibody.

**Preservatives**

0.2 mg/ml in 1X PBS with 0.1 mg/ml rAlbumin (US sourced) and 0.05% sodium azide

**Storage**

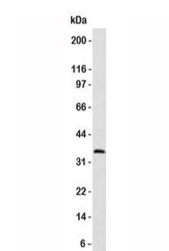
Store the PCNA antibody at 2-8°C (with azide) or aliquot and store at -20°C or colder (without azide).

**Note**

For research use only

**Application notes**

Titration of the PCNA antibody may be required for optimal performance. 1. The prediluted format is supplied in a dropper bottle and is optimized for use in IHC. After epitope retrieval step (if required), drip mAb solution onto the tissue section and incubate at RT for 30 min.



Western blot analysis of HeLa cell lysat...

**Formula**

0.2 mg/ml in 1X PBS with 0.1 mg/ml BSA (US sourced) and 0.05% sodium azide

**Isotype**

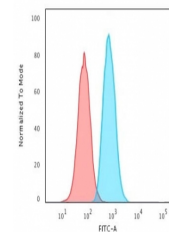
Mouse IgG2a, kappa

**Clonality**

Monoclonal

**Purity**

Protein G affinity chromatography



Flow cytometry testing of PFA-fixed huma...

**Uniprot ID**

**P12004**

**Hazard Information**

This PCNA antibody is available for research use only.

**Dilution Range**

Flow cytometry: 1-2ug/million cells, Western blot: 1-2ug/ml, Immunohistochemistry (FFPE): 1-2ug/ml for 30 min at RT (1), Prediluted IHC only format: incubate for 30 min at RT (2)

**Expiration Date**

12 months from date of receipt.