
Product Datasheet

EpCAM Antibody (orb750084)

Description

Epithelial cellular adhesion molecule (EpCAM), is also

Species/Host

Mouse

Reactivity

Human

Conjugation

Unconjugated

Tested Applications

FACS, IHC-P

Immunogen

Small cell lung carcinoma cells were used as the immunogen for this recombinant Ep-CAM antibody.

Preservatives

0.2 mg/ml in 1X PBS with 0.1 mg/ml rAlbumin (US sourced) and 0.05% sodium azide

Storage

Store the recombinant Ep-CAM antibody at 2-8°C (with azide) or aliquot and store at -20°C or colder (without azide).

Note

For research use only

Application notes

The concentration stated for each application is a general starting point. Variations in protocols, secondaries and substrates may require the recombinant Ep-CAM antibody to be titrated up or down for optimal performance.1. The prediluted format is supplied in a dropper bottle and is optimized for use in IHC. After epitope retrieval step (if required), drip mAb solution onto the tissue section and incubate at RT for 30 min.

Formula

0.2 mg/ml in 1X PBS with 0.1 mg/ml BSA (US sourced) and 0.05% sodium azide

Isotype

Mouse IgG1, kappa

Clonality

Recombinant

Purity

Protein G affinity chromatography

Uniprot ID

[P16422](#)

Hazard Information

This recombinant Ep-CAM antibody is available for research use only.

Entrez

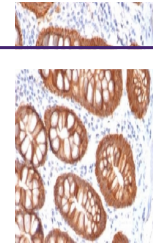
[4072](#)

Dilution Range

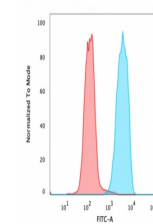
Immunohistochemistry (FFPE): 0.5-1ug/ml for 30 min at RT, Flow cytometry: 1-2ug/million cells

Expiration Date

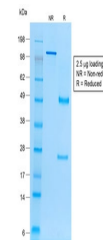
12 months from date of receipt.



IHC testing of colon carcinoma with reco...



Flow cytometry testing of PFA-fixed huma...



SDS-PAGE analysis of purified, BSA-free ...