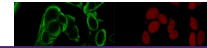

Product Datasheet

EpCAM Antibody (orb750083)

Description

Binding epitope of this antibody is located in the first


Species/Host

Mouse

Reactivity

Human

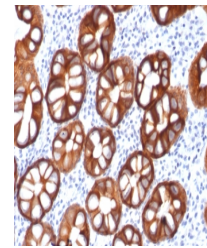
Conjugation

Unconjugated

Tested Applications

FACS, IF, IHC-P, WB

Immunofluorescence testing of human MCF7...



IHC testing of FFPE human colon carcinom...

Immunogen

Neuraminidase treated GLS-1 human small cell lung carcinoma cells were used as the immunogen for the recombinant EpCAM antibody. Binding epitope of the rMOC-31 antibody is located in the first EGF-like repeat domain (EGF1) between amino acids 27-59.

Preservatives

0.2 mg/ml in 1X PBS with 0.1 mg/ml rAlbumin (US sourced) and 0.05% sodium azide

Storage

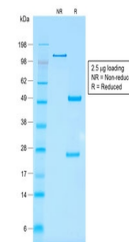
Store the recombinant EpCAM antibody at 2-8°C (with azide) or aliquot and store at -20°C or colder (without azide).

Note

For research use only

Application notes

Optimal dilution of the recombinant EpCAM antibody should be determined by the researcher.1. The prediluted format is supplied in a dropper bottle and is optimized for use in IHC. After epitope retrieval step (if required), drip mAb solution onto the tissue section and incubate at RT for 30 min.



SDS-PAGE analysis of purified, BSA-free

Formula

0.2 mg/ml in 1X PBS with 0.1 mg/ml BSA (US sourced) and 0.05% sodium azide

Isotype

Mouse IgG1, kappa

Clonality

Recombinant

Purity

Protein G affinity chromatography

Uniprot ID

P16422

Hazard Information

This recombinant EpCAM antibody is available for research use only.

Dilution Range

Immunohistochemistry (FFPE): 0.5-1ug/ml for 30 min at RT, Immunofluorescence: 1-2ug/ml, Western blot: 1-2ug/ml, Flow cytometry: 1-2ug/million cells

Expiration Date

12 months from date of receipt.