

---

## Product Datasheet

### EpCAM Antibody (orb750082)

**Description**

EGP40 is a 40-43 kDa transmembrane epithelial


**Species/Host**

Mouse

**Reactivity**

Canine, Feline, Human

**Conjugation**

Unconjugated

**Tested Applications**

ELISA, FACS, IF, IHC-P

**Immunogen**

A human recombinant partial protein corresponding to amino acids 100-224 (extracellular domain) was used as the immunogen for the Ep-CAM antibody.

**Preservatives**

0.2 mg/ml in 1X PBS with 0.1 mg/ml rAlbumin (US sourced) and 0.05% sodium azide

**Storage**

Store the Ep-CAM antibody at 2-8°C (with azide) or aliquot and store at -20°C or colder (without azide).

**Note**

For research use only

**Application notes**

Titering of the Ep-CAM antibody may be required for optimal performance.

**Formula**

0.2 mg/ml in 1X PBS with 0.1 mg/ml BSA (US sourced) and 0.05% sodium azide

**Isotype**

Mouse IgG2b, kappa

**Clonality**

Monoclonal

**Purity**

Protein G affinity chromatography

**Uniprot ID**

**P16422**

**Hazard Information**

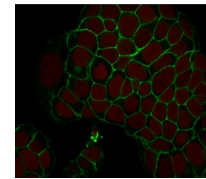
This Ep-CAM antibody is available for research use only.

**Dilution Range**

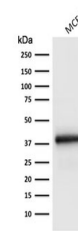
ELISA: 2-4ug/ml (order BSA/azide-free format), Flow cytometry: 0.5-1ug/million cells, Immunofluorescence: 1-2ug/ml, Immunofluorescence: 1-2ug/ml, Immunohistochemistry (FFPE): 0.5-1ug/ml for 30 min at RT

**Expiration Date**

12 months from date of receipt.

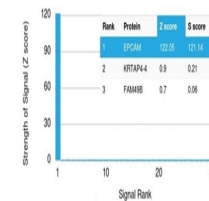


Immunofluorescent staining of human MCF-...



Western blot testing of human MCF7 cell ...

Human Protein Microarray Specificity Validation



Analysis of HuProt (TM) microarray conta...