

---

## Product Datasheet

### CD3 epsilon Antibody (orb750081)

**Description**

Recognizes the epsilon chain of CD3, a protein which


**Species/Host**

Mouse

**Reactivity**

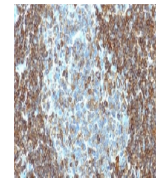
Human, Mouse, Rat

**Conjugation**

Unconjugated

**Tested Applications**

FACS, IF, WB



IHC testing of human tonsil tissue with ...

**Immunogen**

Amino acids 156-168 (cytoplasmic domain) from human CD3 epsilon chain were used as the immunogen for the CD3e antibody.

**Preservatives**

0.2 mg/ml in 1X PBS with 0.1 mg/ml rAlbumin (US sourced) and 0.05% sodium azide

**Storage**

Store the CD3e antibody at 2-8°C (with azide) or aliquot and store at -20°C or colder (without azide).



Western blot testing of human Jurkat cel...

**Note**

For research use only

**Application notes**

Optimal dilution of the CD3e antibody should be determined by the researcher.

**Formula**

0.2 mg/ml in 1X PBS with 0.1 mg/ml BSA (US sourced) and 0.05% sodium azide

**Isotype**

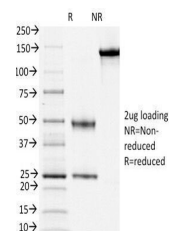
Mouse IgG1, kappa

**Clonality**

Monoclonal

**Purity**

Protein G affinity chromatography



SDS-PAGE Analysis of Purified, BSA-Free ...

**Uniprot ID**

**P07766**

**Hazard Information**

This CD3e antibody is available for research use only.

**Dilution Range**

Flow cytometry: 0.5-1ug/million cells, Immunofluorescence: 1-2ug/ml, Western blot: 1-2ug/ml for 60 min at RT

**Expiration Date**

12 months from date of receipt.