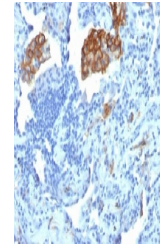


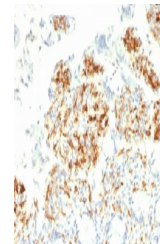
Product Datasheet

DC-SIGN Antibody / CD209 (orb750078)

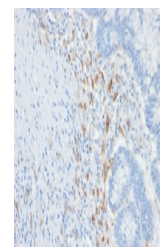
Description	DC-SIGN / CD209 is a transmembrane receptor that is expressed on the surface of dendritic cells and ...
Species/Host	Mouse
Reactivity	Human
Conjugation	Unconjugated
Tested Applications	IHC-P, WB
Immunogen	A human partial recombinant protein was used as the immunogen for the DC-SIGN antibody.
Preservatives	0.2 mg/ml in 1X PBS with 0.1 mg/ml rAlbumin (US sourced) and 0.05% sodium azide
Storage	Store the DC-SIGN antibody at 2-8°C (with azide) or aliquot and store at -20°C or colder (without azide).
Note	For research use only
Application notes	Titring of the DC-SIGN antibody may be required for optimal performance.
Formula	0.2 mg/ml in 1X PBS with 0.1 mg/ml BSA (US sourced) and 0.05% sodium azide
Isotype	Mouse IgG2b, kappa
Clonality	Monoclonal
Purity	Protein G affinity chromatography
Uniprot ID	Q9NNX6
Hazard Information	This DC-SIGN antibody is available for research use only.
Dilution Range	Western blot: 0.5-1ug/ml, Immunohistochemistry (FFPE): 0.5-1ug/ml for 30 min at RT
Expiration Date	12 months from date of receipt.



IHC testing of FFPE human lung carcinoma...



IHC testing of FFPE human small intestine...



IHC testing of FFPE human colon carcinoma...