

---

## Product Datasheet

### Topoisomerase II alpha Antibody / TOP2A (orb750076)

**Description**

This mAb recognizes an ~170kDa protein which is

**Species/Host**

Mouse

**Reactivity**

Human, Mouse

**Conjugation**

Unconjugated

**Tested Applications**

IF, IHC-P, WB

**Immunogen**

Amino acids 1352-1493 from the human protein were used as the immunogen for this Topoisomerase II alpha antibody.

**Preservatives**

0.2 mg/ml in 1X PBS with 0.1 mg/ml rAlbumin (US sourced) and 0.05% sodium azide

**Storage**

Store the Topoisomerase II alpha antibody at 2-8°C (with azide) or aliquot and store at -20°C or colder (without azide).

**Note**

For research use only

**Application notes**

The concentration stated for each application is a general starting point. Variations in protocols, secondaries and substrates may require the Topoisomerase II alpha antibody to be titered up or down for optimal performance.

**Formula**

0.2 mg/ml in 1X PBS with 0.1 mg/ml BSA (US sourced) and 0.05% sodium azide

**Isotype**

Mouse IgG2b, kappa

**Clonality**

Monoclonal

**Purity**

Protein G affinity chromatography

**Uniprot ID**

[P11388](#)

**Hazard Information**

This Topoisomerase II alpha antibody is available for research use only.

**Entrez**

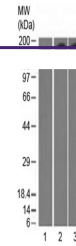
[7153](#)

**Dilution Range**

Immunofluorescence: 1-2ug/ml, Western blot: 1-2ug/ml, Immunohistochemistry (FFPE): 1-2ug/ml for 30 min at RT

**Expiration Date**

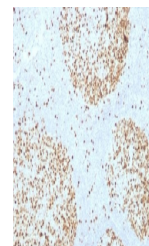
12 months from date of receipt.



Western blot testing of 1) human HepG2, ...



Western blot testing of human HeLa cell ...



IHC testing of FFPE human tonsil with To...