
Product Datasheet

Topoisomerase II alpha Antibody / TOP2A (orb750075)

Description

This mAb recognizes an ~170kDa protein which is



cross-...

Species/Host

Mouse

Reactivity

Human

Conjugation

Unconjugated

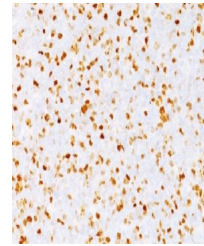
Tested Applications

IF, IHC-P, WB

IHC testing of FFPE human tonsil with TO...

Immunogen

Amino acids 1352-1493 from the human protein were used as the immunogen for this TOP2A antibody.



IHC testing of FFPE human bladder carcin...

Preservatives

0.2 mg/ml in 1X PBS with 0.1 mg/ml rAlbumin (US sourced) and 0.05% sodium azide

Storage

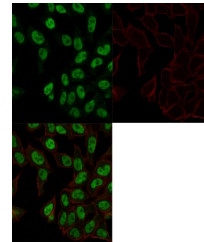
Store the TOP2A antibody at 2-8°C (with azide) or aliquot and store at -20°C or colder (without azide).

Note

For research use only

Application notes

The concentration stated for each application is a general starting point. Variations in protocols, secondaries and substrates may require the TOP2A antibody to be titered up or down for optimal performance.



Immunofluorescent staining of PFA-fixed ...

Formula

0.2 mg/ml in 1X PBS with 0.1 mg/ml BSA (US sourced) and 0.05% sodium azide

Isotype

Mouse IgG2b, kappa

Clonality

Monoclonal

Purity

Protein G affinity chromatography

Uniprot ID

[P11388](#)

Hazard Information

This TOP2A antibody is available for research use only.

Entrez

[7153](#)

Dilution Range

Western blot: 1-2ug/ml, Immunofluorescence: 1-2ug/ml, Immunohistochemistry (FFPE): 1-2ug/ml for 30 min at RT

Expiration Date

12 months from date of receipt.