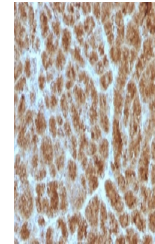


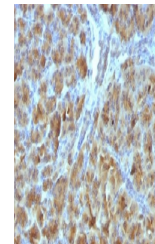
Product Datasheet

CELA3B Antibody / Elastase 3B (orb750072)

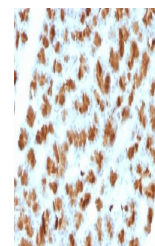
Description	Elastases form a subfamily of serine proteases that hydrolyze many proteins in addition to elastin. ...
Species/Host	Mouse
Reactivity	Human, Mouse, Rat
Conjugation	Unconjugated
Tested Applications	ELISA, IHC-P, WB
Immunogen	A partial recombinant protein (aa 82-238) was used as the immunogen for the Elastase 3B antibody.
Preservatives	0.2 mg/ml in 1X PBS with 0.1 mg/ml rAlbumin (US sourced) and 0.05% sodium azide
Storage	Store the Elastase 3B antibody at 2-8°C (with azide) or aliquot and store at -20°C or colder (without azide).
Note	For research use only
Application notes	Optimal dilution of the Elastase 3B antibody should be determined by the researcher.1. FFPE staining requires
Formula	0.2 mg/ml in 1X PBS with 0.1 mg/ml BSA (US sourced) and 0.05% sodium azide
Isotype	Mouse IgG1, kappa
Clonality	Monoclonal
Purity	Protein G
Uniprot ID	P08861
Hazard Information	This Elastase 3B antibody is available for research use only.
Dilution Range	ELISA: 2-4ug/ml (order BSA/azide-free format),Western blot: 1-2ug/ml,Immunohistochemistry (FFPE): 1-2ug/ml for 30 min at RT
Expiration Date	12 months from date of receipt.



IHC testing of FFPE human pancreas with ...



IHC testing of FFPE mouse pancreas with ...



IHC testing of FFPE rat pancreas with El...