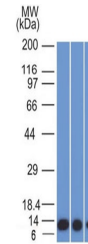


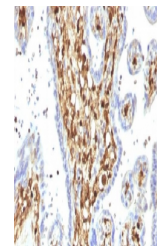
Product Datasheet

S100A4 Antibody / FSP1 (orb750071)

Description	S100A4/FSP1 (Fibroblast specific protein 1) belongs to the S100 super-family of proteins containing ...
Species/Host	Mouse
Reactivity	Human, Mouse
Conjugation	Unconjugated
Tested Applications	FACS, IF, IHC-P, WB
Immunogen	Human recombinant S100A4 protein was used as the immunogen for this S100A4 antibody.
Preservatives	0.2 mg/ml in 1X PBS with 0.1 mg/ml rAlbumin (US sourced) and 0.05% sodium azide
Storage	Store the S100A4 antibody at 2-8°C (with azide) or aliquot and store at -20°C or colder (without azide).
Note	For research use only
Application notes	The optimal dilution of the S100A4 antibody for each application should be determined by the researcher.
Formula	0.2 mg/ml in 1X PBS with 0.1 mg/ml BSA (US sourced) and 0.05% sodium azide
Isotype	Mouse IgG1, kappa
Clonality	Monoclonal
Purity	Protein G affinity chromatography
Uniprot ID	P26447
Hazard Information	This S100A4 antibody is available for research use only.
Dilution Range	Flow cytometry: 1-2ug/million cells, Immunofluorescence: 1-2ug/ml, Western blot: 1-2ug/ml, Immunohistochemistry (FFPE): 1-2ug/ml for 30 min at RT
Expiration Date	12 months from date of receipt.



Western blot testing of human 1) HeLa, 2...



IHC testing of FFPE human placenta with ...



Western blot testing of human HeLa cell ...