
Product Datasheet

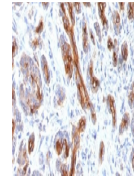
CFTR Antibody / Cystic Fibrosis Transmembrane Regulator (orb750068)

Description

Cystic fibrosis transmembrane conductance



spanning doma...


Species/Host

Mouse

Reactivity

Human

Conjugation

Unconjugated

Tested Applications

IHC-P

IHC testing of FFPE human pancreas with ...

Immunogen

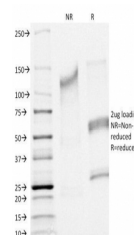
Human recombinant protein was used as the immunogen for this CFTR antibody.

Preservatives

0.2 mg/ml in 1X PBS with 0.1 mg/ml rAlbumin (US sourced) and 0.05% sodium azide

Storage

Store the CFTR antibody at 2-8°C (with azide) or aliquot and store at -20°C or colder (without azide).



SDS-PAGE Analysis of Purified, BSA-Free ...

Note

For research use only

Application notes

The concentration stated for each application is a general starting point. Variations in protocols, secondaries and substrates may require the CFTR antibody to be titered up or down for optimal performance.

Formula

0.2 mg/ml in 1X PBS with 0.1 mg/ml BSA (US sourced) and 0.05% sodium azide

Isotype

Mouse IgG1, kappa

Clonality

Monoclonal

Purity

Protein G affinity chromatography

Hazard Information

This CFTR antibody is available for research use only.

Entrez
[1080](#)
Dilution Range

Immunohistochemistry (FFPE): 0.5-1ug/ml for 30 min at RT

Expiration Date

12 months from date of receipt.