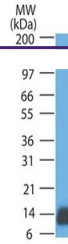

Product Datasheet

S100B Antibody (orb750067)

Description

S100 belongs to the family of calcium binding proteins.



Western blot testing of human samples US...

Species/Host

Mouse

Reactivity

Human, Mouse, Rat

Conjugation

Unconjugated

Tested Applications

IF, IHC-P, WB

Immunogen

Purified bovine brain S100 protein was used as the immunogen for this S100B antibody.

Preservatives

0.2 mg/ml in 1X PBS with 0.1 mg/ml rAlbumin (US sourced) and 0.05% sodium azide

Storage

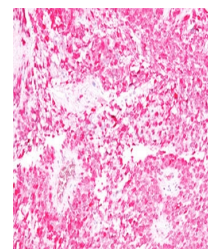
Store the S100B antibody at 2-8°C (with azide) or aliquot and store at -20°C or colder (without azide).

Note

For research use only

Application notes

The concentration stated for each application is a general starting point. Variations in protocols, secondaries and substrates may require the S100B antibody to be titrated up or down for optimal performance.



IHC testing of human melanoma stained wi...

Formula

0.2 mg/ml in 1X PBS with 0.1 mg/ml BSA (US sourced) and 0.05% sodium azide

Isotype

Mouse IgG2a, kappa

Clonality

Monoclonal

Purity

Protein G affinity chromatography

Uniprot ID

P04271

Hazard Information

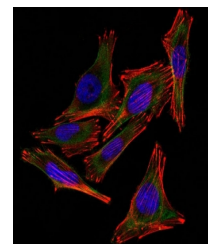
This S100B antibody is available for research use only.

Dilution Range

Immunofluorescence: 1-2ug/ml, Western blot: 1-2ug/ml, Immunohistochemistry (FFPE): 0.25-0.5ug/ml for 30 min at RT

Expiration Date

12 months from date of receipt.



Immunofluorescence testing of A2058 cell...