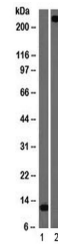


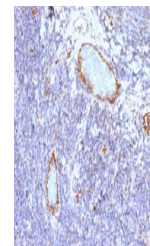
## Product Datasheet

# von Willebrand Factor Antibody / vWF (orb750064)

<b>Description</b>	von Willebrand Factor (vWF) is a multimeric glycoprotein that is found in endothelial cells, plasma ...
<b>Species/Host</b>	Mouse
<b>Reactivity</b>	Human
<b>Conjugation</b>	Unconjugated
<b>Tested Applications</b>	IHC-P, WB
<b>Immunogen</b>	Amino acids 1815-1939 from the human protein were used as the immunogen for this vWF antibody.
<b>Preservatives</b>	0.2 mg/ml in 1X PBS with 0.1 mg/ml rAlbumin (US sourced) and 0.05% sodium azide
<b>Storage</b>	Store the vWF antibody at 2-8°C (with azide) or aliquot and store at -20°C or colder (without azide).
<b>Note</b>	For research use only
<b>Application notes</b>	The optimal dilution of the vWF antibody for each application should be determined by the researcher.
<b>Formula</b>	0.2 mg/ml in 1X PBS with 0.1 mg/ml BSA (US sourced) and 0.05% sodium azide
<b>Isotype</b>	Mouse IgG1, kappa
<b>Clonality</b>	Monoclonal
<b>Purity</b>	Protein G affinity chromatography
<b>Uniprot ID</b>	<b>P04275</b>
<b>Hazard Information</b>	This vWF antibody is available for research use only.
<b>Dilution Range</b>	Western blot: 1-2ug/ml, Immunohistochemistry (FFPE): 1-2ug/ml for 30 min at RT
<b>Expiration Date</b>	12 months from date of receipt.

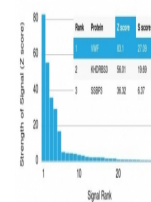


Western blot testing of 1) partial recom...



IHC testing of FFPE human tonsil with vW...

Human Protein Microarray Specificity Validation



Analysis of HuProt (TM) microarray conta...