

---

## Product Datasheet

### PAX8 Antibody (orb750062)

**Description**

PAX8 is a member of the paired box (PAX) family of

**Species/Host**

Mouse

**Reactivity**

Human

**Conjugation**

Unconjugated

**Tested Applications**

FACS, IF, IHC-P, WB

**Immunogen**

A human recombinant fragment (aa 60-261) was used as the immunogen for the PAX8 antibody.

**Preservatives**

0.2 mg/ml in 1X PBS with 0.1 mg/ml rAlbumin (US sourced) and 0.05% sodium azide

**Storage**

Store the PAX8 antibody at 2-8°C (with azide) or aliquot and store at -20°C or colder (without azide).

**Note**

For research use only

**Application notes**

The stated application concentrations are suggested starting points. Titration of the PAX8 antibody may be required due to differences in protocols and secondary/substrate sensitivity.

**Formula**

0.2 mg/ml in 1X PBS with 0.1 mg/ml BSA (US sourced) and 0.05% sodium azide

**Isotype**

Mouse IgG2a, kappa

**Clonality**

Monoclonal

**Purity**

Protein G affinity chromatography

**Uniprot ID**

**Q06710**

**Hazard Information**

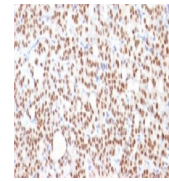
This PAX8 antibody is available for research use only.

**Dilution Range**

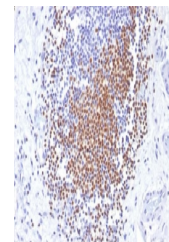
Flow cytometry: 0.5-1ug/million cells, Immunofluorescence: 1-2ug/ml, Western blot: 0.5-1ug/ml, Immunohistochemistry (FFPE): 1-2ug/ml for 30 min at RT

**Expiration Date**

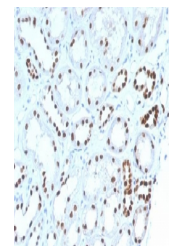
12 months from date of receipt.



IHC testing of FFPE human thyroid carcin...



IHC testing of FFPE human urothelial car...



IHC testing of FFPE human renal cell car...