
Product Datasheet

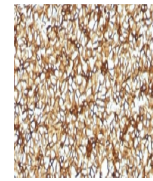
SPTBN2 Antibody / Spectrin beta III (orb750059)

Description

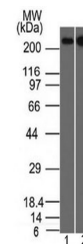
Spectrin is an actin binding protein that is a major



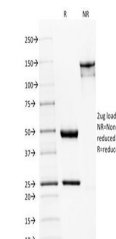
Species/Host	Mouse
Reactivity	Human
Conjugation	Unconjugated
Tested Applications	ELISA, FACS, IF, IHC-P, WB
Immunogen	Human recombinant partial protein corresponding to amino acids 356-475 was used as the immunogen for this Spectrin beta III antibody.
Preservatives	0.2 mg/ml in 1X PBS with 0.1 mg/ml rAlbumin (US sourced) and 0.05% sodium azide
Storage	Store the Spectrin beta III antibody at 2-8°C (with azide) or aliquot and store at -20°C or colder (without azide).
Note	For research use only
Application notes	The concentration stated for each application is a general starting point. Variations in protocols, secondaries and substrates may require the Spectrin beta III antibody to be titrated up or down for optimal performance.
Formula	0.2 mg/ml in 1X PBS with 0.1 mg/ml BSA (US sourced) and 0.05% sodium azide
Isotype	Mouse IgG2a, kappa
Clonality	Monoclonal
Purity	Protein G affinity chromatography
Uniprot ID	015020
Hazard Information	This Spectrin beta III antibody is available for research use only.
Entrez	6712
Dilution Range	ELISA: 2-4ug/ml (order BSA/azide-free format), Flow cytometry: 1-2ug/million cells, Immunofluorescence: 0.5-1ug/ml, Western blot: 0.5-1ug/ml, Immunohistochemistry (FFPE): 0.5-1ug/ml for 30 min at RT
Expiration Date	12 months from date of receipt.



IHC testing of FFPE human pancreas with ...



Western blot testing of human 1) HeLa an...



SDS-PAGE Analysis of Purified, BSA-Free ...