

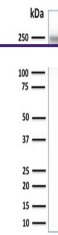
---

## Product Datasheet

### SPTBN2 Antibody / Spectrin beta III (orb750058)

**Description**

Spectrin is an actin binding protein that is a major



Western blot testing of human PANC-1 cel...

**Species/Host**

Mouse

**Reactivity**

Human, Mouse, Rat

**Conjugation**

Unconjugated

**Tested Applications**

FACS, IF, IHC-P, WB

**Immunogen**

Human recombinant partial protein corresponding to amino acids 356-475 was used as the immunogen for this Spectrin beta III antibody.

**Preservatives**

0.2 mg/ml in 1X PBS with 0.1 mg/ml rAlbumin (US sourced) and 0.05% sodium azide

**Storage**

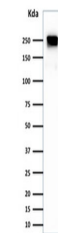
Store the Spectrin beta III antibody at 2-8°C (with azide) or aliquot and store at -20°C or colder (without azide).

**Note**

For research use only

**Application notes**

The concentration stated for each application is a general starting point. Variations in protocols, secondaries and substrates may require the Spectrin beta III antibody to be titrated up or down for optimal performance.



Western blot testing of human HeLa cell ...

**Formula**

0.2 mg/ml in 1X PBS with 0.1 mg/ml BSA (US sourced) and 0.05% sodium azide

**Isotype**

Mouse IgG1, kappa

**Clonality**

Monoclonal

**Purity**

Protein G affinity chromatography

**Uniprot ID**

[O15020](#)

**Hazard Information**

This Spectrin beta III antibody is available for research use only.

**Entrez**

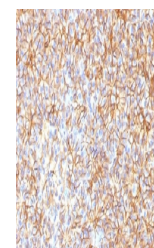
[6712](#)

**Dilution Range**

Flow cytometry: 0.5-1ug/million cells, Immunofluorescence: 0.5-1ug/ml, Western blot: 0.5-1ug/ml, Immunohistochemistry (FFPE): 0.5-1ug/ml for 30 min at RT

**Expiration Date**

12 months from date of receipt.



IHC testing of FFPE human pancreas with ...