

---

## Product Datasheet

**TDP2 Antibody / ETS1 associated protein II  
(orb750056)**

**Description**

This mAb recognizes a protein of 41kDa, which is


**Species/Host**

Mouse

**Reactivity**

Human

**Conjugation**

Unconjugated

**Tested Applications**

FACS, IF, IHC-P

IHC testing of FFPE human duodenal carcinoma...

**Immunogen**

Human recombinant full length protein was used as the immunogen for this TDP2 antibody.

**Preservatives**

0.2 mg/ml in 1X PBS with 0.1 mg/ml rAlbumin (US sourced) and 0.05% sodium azide

**Storage**

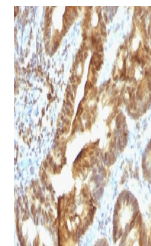
Store the TDP2 antibody at 2-8°C (with azide) or aliquot and store at -20°C or colder (without azide).

**Note**

For research use only

**Application notes**

The concentration stated for each application is a general starting point. Variations in protocols, secondaries and substrates may require the TDP2 antibody to be titered up or down for optimal performance.



IHC testing of FFPE human colon carcinoma...

**Formula**

0.2 mg/ml in 1X PBS with 0.1 mg/ml BSA (US sourced) and 0.05% sodium azide

**Isotype**

Mouse IgG2b, kappa

**Clonality**

Monoclonal

**Purity**

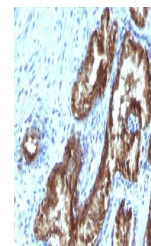
Protein G affinity chromatography

**Uniprot ID**

**O95551**

**Hazard Information**

This TDP2 antibody is available for research use only.



IHC testing of FFPE human prostate carcinoma...

**Dilution Range**

FACS: 0.5-1ug/million cells in 0.1ml, Immunofluorescence: 0.5-1ug/ml, Immunohistochemistry (FFPE): 0.5-1ug/ml for 30 min at RT

**Expiration Date**

12 months from date of receipt.