

Product Datasheet

FAT2 Antibody / Protocadherin Fat 2 (orb750054)

Description

Recognizes a protein of 480kDa, which is identified as


Species/Host

Mouse

Reactivity

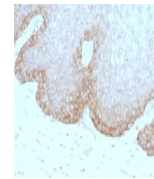
Human

Conjugation

Unconjugated

Tested Applications

FACS, IF, IHC-P



IHC testing of human cervical carcinoma ...

Immunogen

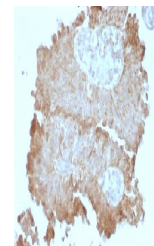
A recombinant human Protocadherin Fat 2 fusion protein was used as the immunogen for this FAT2 antibody.

Preservatives

0.2 mg/ml in 1X PBS with 0.1 mg/ml rAlbumin (US sourced) and 0.05% sodium azide

Storage

The FAT2 antibody (with azide) can be stored at 2-8°C. The azide-free format should be aliquoted and stored at -20°C or colder.



IHC testing of human bladder carcinoma W...

Note

For research use only

Application notes

Titering of the FAT2 antibody may be required for optimal performance.

Formula

0.2 mg/ml in 1X PBS with 0.1 mg/ml BSA (US sourced) and 0.05% sodium azide

Isotype

Mouse IgG1, kappa

Clonality

Monoclonal

Purity

Protein G affinity chromatography

Uniprot ID

Q9NYQ8

Hazard Information

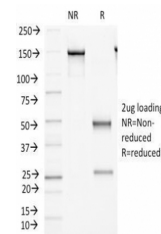
This FAT2 antibody is available for research use only.

Dilution Range

Flow cytometry: 0.5-1ug/million cells, Immunofluorescence: 1-2ug/ml, Immunohistochemistry (FFPE): 0.5-1ug/ml for 30 min at RT

Expiration Date

12 months from date of receipt.



SDS-PAGE Analysis of Purified, BSA-Free ...