
Product Datasheet

SOX2 Antibody (orb750053)

Description

SOX2 is a member of the SRY-related HMG-box (SOX) family


Species/Host

Mouse

Reactivity

Human, Mouse

Conjugation

Unconjugated

Tested Applications

ELISA, IHC-P, WB

Immunogen

Amino acids 176-305 of the human protein were used as the immunogen for the SOX-2 antibody.

Preservatives

0.2 mg/ml in 1X PBS with 0.1 mg/ml rAlbumin (US sourced) and 0.05% sodium azide

Storage

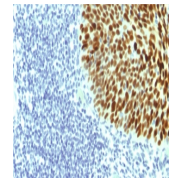
Store the SOX-2 antibody at 2-8°C (with azide) or aliquot and store at -20°C or colder (without azide).

Note

For research use only

Application notes

Optimal dilution of the SOX-2 antibody should be determined by the researcher.1. The prediluted format is supplied in a dropper bottle and is optimized for use in IHC. After epitope retrieval step (if required), drip mAb solution onto the tissue section and incubate at RT for 30 min.



IHC testing of FFPE human cervical carci...



IHC testing of FFPE human lung carcinoma...

Formula

0.2 mg/ml in 1X PBS with 0.1 mg/ml BSA (US sourced) and 0.05% sodium azide

Isotype

Mouse IgG2b, kappa

Clonality

Monoclonal

Purity

Protein G affinity chromatography

Uniprot ID

[P48431](#)

Hazard Information

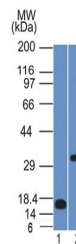
This SOX-2 antibody is available for research use only.

Dilution Range

ELISA: 2-4ug/ml (order BSA/azide-free format),Western blot: 1-2ug/ml,Immunohistochemistry (FFPE): 1-2ug/ml for 30 min at RT

Expiration Date

12 months from date of receipt.



Western blot testing of 1) partial human...