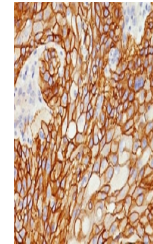


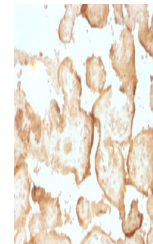
Product Datasheet

EGF Receptor / EGFR Antibody (orb750037)

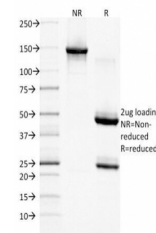
Description	Epidermal growth factor receptor (EGFR) exists on the cell surface and is activated by binding of it...
Species/Host	Mouse
Reactivity	Human
Conjugation	Unconjugated
Tested Applications	IHC-P, WB
Immunogen	Purified recombinant human EGFR was used as the immunogen for the EGF Receptor antibody.
Preservatives	0.2 mg/ml in 1X PBS with 0.1 mg/ml rAlbumin (US sourced) and 0.05% sodium azide
Storage	Store the EGF Receptor antibody at 2-8°C (with azide) or aliquot and store at -20°C or colder (without azide).
Note	For research use only
Application notes	Optimal dilution of the EGF Receptor antibody should be determined by the researcher.
Formula	0.2 mg/ml in 1X PBS with 0.1 mg/ml BSA (US sourced) and 0.05% sodium azide
Isotype	Mouse IgG1, kappa
Clonality	Monoclonal
Purity	Protein G affinity chromatography
Uniprot ID	P00533
Hazard Information	This EGF Receptor antibody is available for research use only.
Dilution Range	Immunohistochemistry (FFPE): 0.1-0.2ug/ml for 30 min at RT, Western blot: 1-2ug/ml
Expiration Date	12 months from date of receipt.



IHC testing of FFPE human lung squamous ...



IHC testing of FFPE human placenta with ...



SDS-PAGE Analysis of Purified, BSA-Free ...