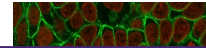

Product Datasheet

E-Cadherin Antibody / CDH1 (orb750019)

Description

Recognizes a protein of 80-120kDa, identified as E-


Species/Host

Mouse

Reactivity

Human, Mouse, Rat

Conjugation

Unconjugated

Tested Applications

FACS, IF, IHC-P, WB

Immunofluorescent staining of human MCF7...

Immunogen

A recombinant human protein was used as the immunogen for the E-Cadherin antibody.

Preservatives

0.2 mg/ml in 1X PBS with 0.1 mg/ml rAlbumin (US sourced) and 0.05% sodium azide

Storage

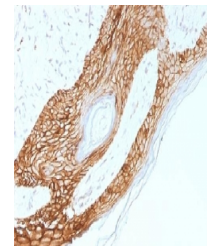
Store the E-Cadherin antibody at 2-8°C (with azide) or aliquot and store at -20°C or colder (without azide).

Note

For research use only

Application notes

Optimal dilution of the E-Cadherin antibody should be determined by the researcher.



IHC testing of FFPE human skin with E-Ca...

Formula

0.2 mg/ml in 1X PBS with 0.1 mg/ml BSA (US sourced) and 0.05% sodium azide

Isotype

Mouse IgG1, kappa

Clonality

Monoclonal

Purity

Protein G affinity chromatography



Western blot testing of human MCF-7 cell...

Uniprot ID

P12830

Hazard Information

This E-Cadherin antibody is available for research use only.

Dilution Range

Flow cytometry: 1-2ug/million cells, Immunofluorescence: 1-4ug/ml, Western blot: 1-2ug/ml, Immunohistochemistry (FFPE): 1-2ug/ml for 30 min at RT

Expiration Date

12 months from date of receipt.