
Product Datasheet

ASRGL1 Antibody / ALP1 (orb750018)

Description

ASRGL1 (Asparaginase-like protein 1), also known as

Species/Host

Mouse

Reactivity

Human

Conjugation

Unconjugated

Tested Applications

IHC-P

Immunogen

A human partial recombinant protein was used as the immunogen for this ASRGL1 antibody.

Preservatives

0.2 mg/ml in 1X PBS with 0.1 mg/ml rAlbumin (US sourced) and 0.05% sodium azide

Storage

Store the ASRGL1 antibody at 2-8°C (with azide) or aliquot and store at -20°C or colder (without azide).

Note

For research use only

Application notes

The concentration stated for each application is a general starting point. Variations in protocols, secondaries and substrates may require the ASRGL1 antibody to be titrated up or down for optimal performance.

Formula

0.2 mg/ml in 1X PBS with 0.1 mg/ml BSA (US sourced) and 0.05% sodium azide

Isotype

Mouse IgG1, kappa

Clonality

Monoclonal

Purity

Protein G affinity chromatography

Hazard Information

This ASRGL1 antibody is available for research use only.

Entrez

[80150](#)

Dilution Range

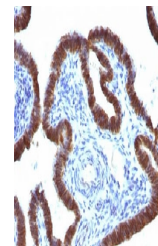
Immunohistochemistry (FFPE): 0.5-1ug/ml for 30 min at RT

Expiration Date

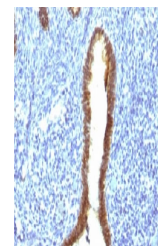
12 months from date of receipt.



IHC testing of FFPE human endometrium with ASRGL1 antibody.



IHC testing of FFPE human fallopian tube with ASRGL1 antibody.



IHC testing of FFPE human uterus with ASRGL1 antibody.