
Product Datasheet

E-Cadherin Antibody / CDH1 (orb750012)

Description

Recognizes a protein of 80-120kDa, identified as E-

Species/Host

Mouse

Reactivity

Human

Conjugation

Unconjugated

Tested Applications

IF, IHC-P, WB

Immunogen

A full length recombinant human protein was used as the immunogen for the E-Cadherin antibody.

Preservatives

0.2 mg/ml in 1X PBS with 0.1 mg/ml rAlbumin (US sourced) and 0.05% sodium azide

Storage

Store the E-Cadherin antibody at 2-8°C (with azide) or aliquot and store at -20°C or colder (without azide).

Note

For research use only

Application notes

Optimal dilution of the E-Cadherin antibody should be determined by the researcher.1. Staining of formalin-fixed tissues requires boiling tissue sections in pH 9 10mM Tris with 1mM EDTA for 10-20 min followed by cooling at RT for 20 min.

Formula

0.2 mg/ml in 1X PBS with 0.1 mg/ml BSA (US sourced) and 0.05% sodium azide

Isotype

Mouse IgG1, kappa

Clonality

Monoclonal

Purity

Protein G affinity chromatography

Uniprot ID

P12830

Hazard Information

This E-Cadherin antibody is available for research use only.

Dilution Range

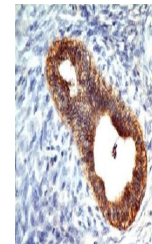
Immunofluorescence: 1-2ug/ml, Western blot: 1-2ug/ml, Immunohistochemistry (FFPE): 1-2ug/ml for 30 min at RT

Expiration Date

12 months from date of receipt.



Formalin-fixed, paraffin-embedded human ...



Formalin-fixed, paraffin-embedded human ...



Formalin-fixed, paraffin-embedded human ...