

---

## Product Datasheet

### Hepatocyte Specific Antigen Antibody (orb750007)

**Description**

mAb HSA133 stains human liver canaliculi and a

sectio...

**Species/Host**

Mouse

**Reactivity**

Human

**Conjugation**

Unconjugated

**Tested Applications**

ELISA

**Immunogen**

The human hepatocellular carcinoma cell line SK-H1A9-2 was used as the immunogen for this Hepatocyte Specific Antigen antibody.

**Preservatives**

0.2 mg/ml in 1X PBS with 0.1 mg/ml rAlbumin (US sourced) and 0.05% sodium azide

**Storage**

Store the Hepatocyte Specific Antigen antibody at 2-8°C (with azide) or aliquot and store at -20°C or colder (without azide).

**Note**

For research use only

**Application notes**

The optimal dilution of the Hepatocyte Specific Antigen antibody for each application should be determined by the researcher.

**Formula**

0.2 mg/ml in 1X PBS with 0.1 mg/ml BSA (US sourced) and 0.05% sodium azide

**Isotype**

Mouse IgG2b, kappa

**Clonality**

Monoclonal

**Purity**

Protein G affinity chromatography

**Uniprot ID**

Not Known

**Hazard Information**

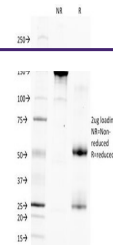
This Hepatocyte Specific Antigen antibody is available for research use only.

**Dilution Range**

ELISA (For coating, purchase antibody without BSA)

**Expiration Date**

12 months from date of receipt.


 SDS-PAGE  
 Analysis of  
 Purified,  
 BSA-Free ...