

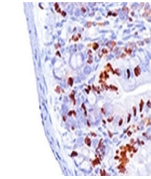
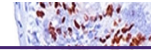
---

## Product Datasheet

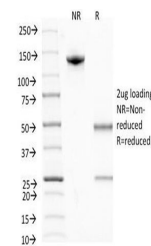
### Bromodeoxyuridine / BrdU Antibody (orb749990)

**Description**

It reacts with Bromodeoxyuridine (BrdU) in single



IHC:  
Formalin-fixed,  
paraffin-embedded  
m...



SDS-PAGE  
Analysis of  
Purified,  
BSA-Free ...

**Species/Host**

Mouse

**Reactivity**

All

**Conjugation**

Unconjugated

**Tested Applications**

FACS, IF, IHC-P

**Immunogen**

BrdU conjugated to hemocyanine was used as the immunogen for the Bromodeoxyuridine antibody.

**Preservatives**

0.2 mg/ml in 1X PBS with 0.1 mg/ml rAlbumin (US sourced) and 0.05% sodium azide

**Storage**

Store the Bromodeoxyuridine antibody at 2-8°C (with azide) or aliquot and store at -20°C or colder (without azide).

**Note**

For research use only

**Application notes**

Optimal dilution of the Bromodeoxyuridine antibody should be determined by the researcher.1. For staining of formalin-fixed tissues, incubate sections in 4N HCl for 30 min at RT followed by digestion with Trypsin at 1mg/ml PBS, 10 min at 37°C.2. The prediluted format is supplied in a dropper bottle and is optimized for use in IHC. After epitope retrieval step (if required), drip mAb solution onto the tissue section and incubate at RT for 30 min.

**Formula**

0.2 mg/ml in 1X PBS with 0.1 mg/ml BSA (US sourced) and 0.05% sodium azide

**Isotype**

Mouse IgG1, kappa

**Clonality**

Monoclonal

**Purity**

Protein G affinity chromatography

**Uniprot ID**

Not Applicable

**Hazard Information**

This Bromodeoxyuridine antibody is available for research use only.

**Dilution Range**

Flow cytometry: 0.5-1ug/million cells, Immunofluorescence: 0.5-1ug/ml, Immunohistochemistry (FFPE): 0.5-1ug/ml for 30 min at RT

**Expiration Date**

12 months from date of receipt.