
Product Datasheet

Actin Antibody Cocktail (pan muscle) (orb749985)

Description

This antibody recognizes actin of skeletal, cardiac,


Species/Host

Mouse

Reactivity

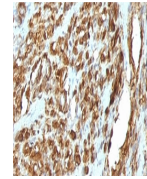
Human, Rat

Conjugation

Unconjugated

Tested Applications

IHC-P



IHC:
Formalin-fixed,
paraffin-embedded
h...

Immunogen

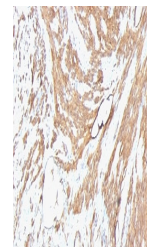
Recombinant human actin fragment was used as the immunogen for the pan Muscle Actin antibody cocktail.

Preservatives

0.2 mg/ml in 1X PBS with 0.1 mg/ml rAlbumin (US sourced) and 0.05% sodium azide

Storage

Store the pan Muscle Actin antibody cocktail at 2-8°C (with azide) or aliquot and store at -20°C or colder (without azide).


Note

For research use only

Application notes

Optimal dilution of the pan Muscle Actin antibody cocktail should be determined by the researcher.1. Staining of formalin-fixed tissues requires boiling tissue sections in pH 9 10mM Tris with 1mM EDTA for 10-20 min followed by cooling at RT for 20 min.2. The prediluted format is supplied in a dropper bottle and is optimized for use in IHC. After epitope retrieval step (if required), drip mAb solution onto the tissue section and incubate at RT for 30 min.

IHC:
Formalin-fixed,
paraffin-embedded
h...

Formula

0.2 mg/ml in 1X PBS with 0.1 mg/ml BSA (US sourced) and 0.05% sodium azide

Isotype

Mouse IgG1, kappa

Clonality

Monoclonal

Purity

Protein G affinity chromatography

Uniprot ID

P62736, P68032, P68133

Hazard Information

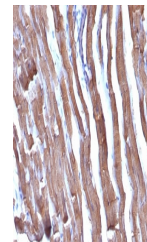
This pan Muscle Actin antibody cocktail is available for research use only.

Dilution Range

Immunohistochemistry (FFPE): 0.25-0.5ug/ml for 30 min at RT

Expiration Date

12 months from date of receipt.



IHC:
Formalin-fixed,
paraffin-embedded
r...