

---

## Product Datasheet

### Actin Antibody (pan muscle) (orb749983)

**Description**

This antibody recognizes actin of skeletal, cardiac, and


**Species/Host**

Mouse

**Reactivity**

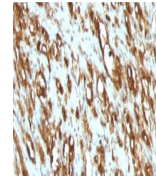
Human, Rat

**Conjugation**

Unconjugated

**Tested Applications**

IHC-P, WB



IHC:  
Formalin-fixed,  
paraffin-embedded  
h...

**Immunogen**

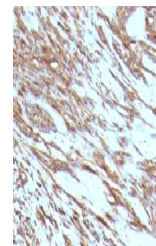
An amino acid sequence common among human skeletal, cardiac and smooth muscle actins was used as the immunogen for the pan Muscle Actin antibody.

**Preservatives**

0.2 mg/ml in 1X PBS with 0.1 mg/ml rAlbumin (US sourced) and 0.05% sodium azide

**Storage**

Store the pan Muscle Actin antibody at 2-8°C (with azide) or aliquot and store at -20°C or colder (without azide).



IHC:  
Formalin-fixed,  
paraffin-embedded  
h...

**Note**

For research use only

**Application notes**

Optimal dilution of the pan Muscle Actin antibody should be determined by the researcher.1. Staining of formalin-fixed tissues requires boiling tissue sections in pH 9 10mM Tris with 1mM EDTA for 10-20 min followed by cooling at RT for 20 min.2. The prediluted format is supplied in a dropper bottle and is optimized for use in IHC. After epitope retrieval step (if required), drip mAb solution onto the tissue section and incubate at RT for 30 min.



IHC:  
Formalin-fixed,  
paraffin-embedded  
r...

**Formula**

0.2 mg/ml in 1X PBS with 0.1 mg/ml BSA (US sourced) and 0.05% sodium azide

**Isotype**

Mouse IgG1, kappa

**Clonality**

Monoclonal

**Purity**

Protein G affinity chromatography

**Uniprot ID**

**P62736, P68032, P68133**

**Hazard Information**

This pan Muscle Actin antibody is available for research use only.

**Dilution Range**

Western blot: 1-2ug/ml, Immunohistochemistry (FFPE): 1-2ug/ml for 30 min at RT

**Expiration Date**

12 months from date of receipt.