
Product Datasheet

Progesterone Antibody (orb749972)

Description

This mAb is specific for progesterone. It exhibits minimal

Species/Host

Mouse

Reactivity

All

Conjugation

Unconjugated

Tested Applications

ELISA, IHC, RIA

Immunogen

Progesterone- 11a-hemisuccinate conjugated to bovine serum albumin (Pr11a-HMS-BSA) was used as the immunogen for the Progesterone antibody.

Preservatives

0.2 mg/ml in 1X PBS with 0.1 mg/ml rAlbumin (US sourced) and 0.05% sodium azide

Storage

Store the Progesterone antibody at 2-8°C (with azide) or aliquot and store at -20°C or colder (without azide).

Note

For research use only

Application notes

Optimal dilution of the Progesterone antibody should be determined by the researcher.

Formula

0.2 mg/ml in 1X PBS with 0.1 mg/ml BSA (US sourced) and 0.05% sodium azide

Isotype

Mouse IgG1, kappa

Clonality

Monoclonal

Purity

Protein G affinity chromatography

Uniprot ID

Not Applicable

Hazard Information

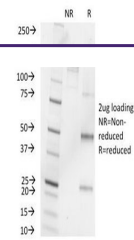
This Progesterone antibody is available for research use only.

Dilution Range

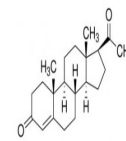
ELISA (order BSA/sodium azide-free format for coating), Immunohistochemistry: not tested, Radioimmunoassay (RIA)

Expiration Date

12 months from date of receipt.



SDS-PAGE
Analysis of
Purified, BSA-
Free ...



Molecular
Structure of
Progesterone