

---

## Product Datasheet

### Cytokeratin 10/13 Antibody (orb749937)

**Description**

This antibody recognizes cytokeratin 10 (56.5kDa) and


**Species/Host**

Mouse

**Reactivity**

Human

**Conjugation**

Unconjugated

**Tested Applications**

FACS, IF, IHC-P, WB

**Immunogen**

A cytoskeletal preparation extracted from human ectocervical epithelium was used as the immunogen for the Cytokeratin 10/13 antibody.

**Preservatives**

0.2 mg/ml in 1X PBS with 0.1 mg/ml rAlbumin (US sourced) and 0.05% sodium azide

**Storage**

Store the Cytokeratin 10/13 antibody at 2-8°C (with azide) or aliquot and store at -20°C or colder (without azide).

**Note**

For research use only

**Application notes**

Optimal dilution of the Cytokeratin 10/13 antibody should be determined by the researcher.1. Staining of formalin-fixed tissues requires boiling tissue sections in 10mM Citrate buffer, pH 6.0, for 10-20 min followed by cooling at RT for 20 min.2. The prediluted format is supplied in a dropper bottle and is optimized for use in IHC. After epitope retrieval step (if required), drip mAb solution onto the tissue section and incubate at RT for 30 min.

**Formula**

0.2 mg/ml in 1X PBS with 0.1 mg/ml BSA (US sourced) and 0.05% sodium azide

**Isotype**

Mouse IgG2a, kappa

**Clonality**

Monoclonal

**Purity**

Protein G affinity chromatography

**Uniprot ID**

**P13646, P13645**

**Hazard Information**

This Cytokeratin 10/13 antibody is available for research use only.

**Dilution Range**

Flow cytometry: 1-2ug/10<sup>6</sup> cells, Immunofluorescence: 1-2ug/ml, Western blot: 1-2ug/ml, Immunohistochemistry (FFPE): 1-2ug/ml for 30 min at RT

**Expiration Date**

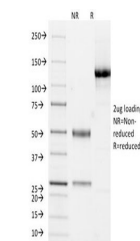
12 months from date of receipt.



IHC analysis of formalin-fixed, paraffin...



Western blot testing of A431 cell lysate...



SDS-PAGE Analysis of Purified, BSA-Free ...