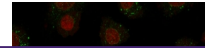

Product Datasheet

MVP Antibody / Major Vault Protein (orb749929)

Description

Recognizes a protein of 104kDa-110kDa,



are large ...

Species/Host

Mouse

Reactivity

Human

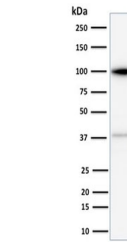
Conjugation

Unconjugated

Tested Applications

IF, WB

Immunofluorescent staining of human A549...



Western blot testing of HeLa cell lysate...

Immunogen

Proteins precipitated from human breast cancer MCF-7 cells were used as the immunogen for the Major Vault Protein antibody.

Preservatives

0.2 mg/ml in 1X PBS with 0.1 mg/ml rAlbumin (US sourced) and 0.05% sodium azide

Storage

Store the Major Vault Protein antibody at 2-8°C (with azide) or aliquot and store at -20°C or colder (without azide).

Note

For research use only

Application notes

Optimal dilution of the Major Vault Protein antibody should be determined by the researcher.

Formula

0.2 mg/ml in 1X PBS with 0.1 mg/ml BSA (US sourced) and 0.05% sodium azide

Isotype

Mouse IgG1, kappa

Clonality

Monoclonal

Purity

Protein G affinity chromatography

Uniprot ID

[Q14764](#)

Hazard Information

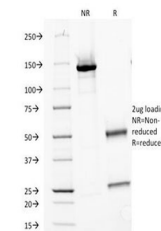
This Major Vault Protein antibody is available for research use only.

Dilution Range

Western blot: 1-2ug/ml, Immunofluorescence: 1-2ug/ml

Expiration Date

12 months from date of receipt.



SDS-PAGE Analysis of Purified, BSA-Free ...