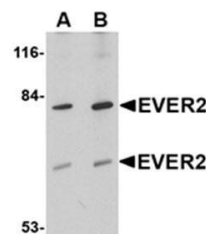


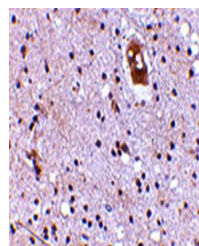
## Product Datasheet

### EVER2 Antibody (orb74989)

<b>Description</b>	EVER2 Antibody
<b>Species/Host</b>	Rabbit
<b>Reactivity</b>	Human, Mouse, Rat
<b>Conjugation</b>	Unconjugated
<b>Tested Applications</b>	ELISA, IHC, WB
<b>Storage</b>	Store at -20°C for long term preservation (recommended). Store at 4°C for short term use.
<b>Note</b>	For research use only
<b>Clonality</b>	Recombinant
<b>Uniprot ID</b>	<b>Q8IU68</b>
<b>Expiration Date</b>	12 months from date of receipt.



Western blot analysis of Jurkat cell lys...



Immunohistochemical analysis of formalin...