

---

## Product Datasheet

### Napsin A Antibody (orb749887)

**Description**

Napsin is a pepsin-like aspartic proteinase connected with

**Species/Host**

Mouse

**Reactivity**

Human

**Conjugation**

Unconjugated

**Tested Applications**

IHC-P, WB

**Immunogen**

A recombinant fragment corresponding to amino acids 189-299 from the human protein was used as the immunogen for the Napsin A antibody.

**Preservatives**

0.2 mg/ml in 1X PBS with 0.1 mg/ml rAlbumin (US sourced) and 0.05% sodium azide

**Storage**

Store the Napsin A antibody at 2-8°C (with azide) or aliquot and store at -20°C or colder (without azide).

**Note**

For research use only

**Application notes**

Optimal dilution of the Napsin A antibody should be determined by the researcher. 1. Staining of formalin-fixed tissues requires boiling tissue sections in pH 9 10mM Tris with 1mM EDTA for 10-20 min followed by cooling at RT for 20 min. 2. The prediluted format is supplied in a dropper bottle and is optimized for use in IHC. After epitope retrieval step (if required), drip mAb solution onto the tissue section and incubate at RT for 30 min.

**Formula**

0.2 mg/ml in 1X PBS with 0.1 mg/ml BSA (US sourced) and 0.05% sodium azide

**Isotype**

Mouse IgG1, kappa

**Clonality**

Monoclonal

**Purity**

Protein G affinity chromatography

**Uniprot ID**

[O96009](#)

**Hazard Information**

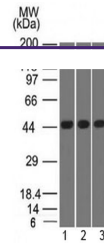
This Napsin A antibody is available for research use only.

**Dilution Range**

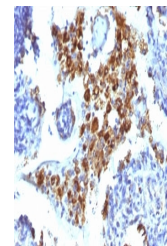
Western blot: 1-2ug/ml, Immunohistochemistry (FFPE): 1-2ug/ml for 30 min at RT

**Expiration Date**

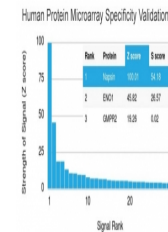
12 months from date of receipt.



Western blot of human 1) K562, 2) HEK293...



IHC: Formalin-fixed, paraffin-embedded h...



Analysis of HuProt (TM) microarray conta...