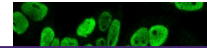

Product Datasheet

Cyclin B1 Antibody / CCNB1 (orb749863)

Description

It recognizes a protein of 55-62kDa, identified as


Species/Host

Mouse

Reactivity

Human

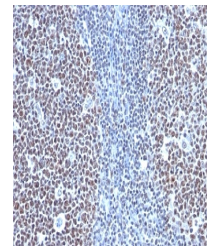
Conjugation

Unconjugated

Tested Applications

IF, IHC-P

Immunofluorescent staining of PFA-fixed ...



IHC: Formalin-fixed, paraffin-embedded h...

Immunogen

Recombinant human full-length protein was used as the immunogen for the CCNB1 antibody.

Preservatives

0.2 mg/ml in 1X PBS with 0.1 mg/ml rAlbumin (US sourced) and 0.05% sodium azide

Storage

Store the CCNB1 antibody at 2-8°C (with azide) or aliquot and store at -20°C or colder (without azide).

Note

For research use only

Application notes

Optimal dilution of the CCNB1 antibody should be determined by the researcher.1. Staining of formalin-fixed tissues requires boiling tissue sections in pH 9 10mM Tris with 1mM EDTA for 10-20 min followed by cooling at RT for 20 min.2. The prediluted format is supplied in a dropper bottle and is optimized for use in IHC. After epitope retrieval step (if required), drip mAb solution onto the tissue section and incubate at RT for 30 min.

Formula

0.2 mg/ml in 1X PBS with 0.1 mg/ml BSA (US sourced) and 0.05% sodium azide

Isotype

Mouse IgG1, kappa

Clonality

Monoclonal

Purity

Protein G affinity chromatography

Uniprot ID

P14635

Hazard Information

This CCNB1 antibody is available for research use only.

Dilution Range

Immunofluorescence: 1-2ug/ml, Immunohistochemistry (FFPE): 1-2ug/ml for 30 min at RT

Expiry Date

12 months from date of receipt.