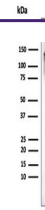

Product Datasheet

Caldesmon / CAD Antibody HMW (orb749856)

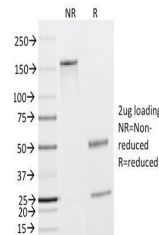
Description

Caldesmon is an actin- and myosin-binding protein

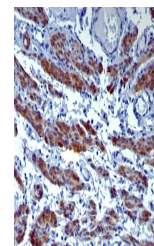
Species/Host	Mouse
Reactivity	Human
Conjugation	Unconjugated
Tested Applications	FACS, IF, IHC-P, WB
Immunogen	Crude human uterus extract was used as the immunogen for the CAD antibody.
Preservatives	0.2 mg/ml in 1X PBS with 0.1 mg/ml rAlbumin (US sourced) and 0.05% sodium azide
Storage	Store the CAD antibody at 2-8°C (with azide) or aliquot and store at -20°C or colder (without azide).
Note	For research use only
Application notes	Optimal dilution of the CAD antibody should be determined by the researcher.1. Staining of formalin-fixed tissues requires boiling tissue sections in 10mM Tris with 1mM EDTA, pH 9.0, for 10-20 min followed by cooling at RT for 20 min.2. The prediluted format is supplied in a dropper bottle and is optimized for use in IHC. After epitope retrieval step (if required), drip mAb solution onto the tissue section and incubate at RT for 30 min.
Formula	0.2 mg/ml in 1X PBS with 0.1 mg/ml BSA (US sourced) and 0.05% sodium azide
Isotype	Mouse IgG1, kappa
Clonality	Monoclonal
Purity	Protein G affinity chromatography
Uniprot ID	Q05682
Hazard Information	This CAD antibody is available for research use only.
Dilution Range	Flow cytometry: 0.5-1ug/million cells, Immunofluorescence: 1-2ug/ml, Immunohistochemistry (FFPE): 1-2ug/ml for 30 min at RT, Western blot: 1-2ug/ml
Expiration Date	12 months from date of receipt.



Western blot testing of human ovary tiss...



SDS-PAGE Analysis of Purified, BSA-Free ...



IHC: Formalin-fixed, paraffin-embedded h...