

---

## Product Datasheet

### WT1 Antibody / Wilms Tumor 1 (orb749846)

**Description**

Recognizes a 47-55kDa-tumor suppressor protein,

**Species/Host**

Mouse

**Reactivity**

Human, Rat

**Conjugation**

Unconjugated

**Tested Applications**

IHC-P

**Immunogen**

A recombinant protein corresponding to residues 1-181 from the human protein was used as the immunogen for the Wilms Tumor 1 antibody.

**Preservatives**

0.2 mg/ml in 1X PBS with 0.1 mg/ml rAlbumin (US sourced) and 0.05% sodium azide

**Storage**

Store the Wilms Tumor 1 antibody at 2-8°C (with azide) or aliquot and store at -20°C or colder (without azide).

**Note**

For research use only

**Application notes**

Optimal dilution of the Wilms Tumor 1 antibody should be determined by the researcher.1. The prediluted format is supplied in a dropper bottle and is optimized for use in IHC. After epitope retrieval step (if required), drip mAb solution onto the tissue section and incubate at RT for 30 min.

**Formula**

0.2 mg/ml in 1X PBS with 0.1 mg/ml BSA (US sourced) and 0.05% sodium azide

**Isotype**

Mouse IgG1, kappa

**Clonality**

Monoclonal

**Purity**

Protein G affinity chromatography

**Uniprot ID**

**P19544**

**Hazard Information**

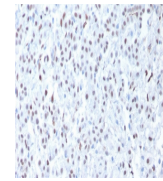
This Wilms Tumor 1 antibody is available for research use only.

**Dilution Range**

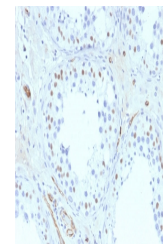
Immunohistochemistry (FFPE): 1-2ug/ml for 30 min at RT

**Expiration Date**

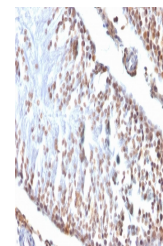
12 months from date of receipt.



IHC testing of FFPE human mesothelioma w...



IHC testing of FFPE human testis with Wi...



IHC testing of FFPE rat testis with Wilm...