
Product Datasheet

SUMO1 Antibody (orb749835)

Description

This mAb is specific to SUMO-1 and shows no cross-reaction


Species/Host

Mouse

Reactivity

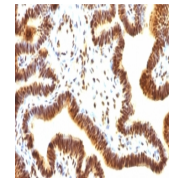
Human, Rat

Conjugation

Unconjugated

Tested Applications

FACS, IF, IHC-P, WB



IHC: Formalin-fixed, paraffin-embedded h...

Immunogen

Recombinant human protein was used as the immunogen for the SUMO-1 antibody.

Preservatives

0.2 mg/ml in 1X PBS with 0.1 mg/ml rAlbumin (US sourced) and 0.05% sodium azide

Storage

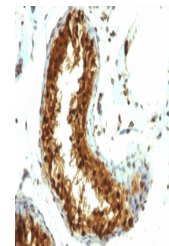
Store the SUMO-1 antibody at 2-8°C (with azide) or aliquot and store at -20°C or colder (without azide).

Note

For research use only

Application notes

Optimal dilution of the SUMO-1 antibody should be determined by the researcher.1. Staining of formalin-fixed tissues requires boiling tissue sections in 10mM Citrate buffer, pH 6.0, for 10-20 min followed by cooling at RT for 20 min.2. The prediluted format is supplied in a dropper bottle and is optimized for use in IHC. After epitope retrieval step (if required), drip mAb solution onto the tissue section and incubate at RT for 30 min.



IHC: Formalin-fixed, paraffin-embedded h...

Formula

0.2 mg/ml in 1X PBS with 0.1 mg/ml BSA (US sourced) and 0.05% sodium azide

Isotype

Mouse IgG1, kappa

Clonality

Monoclonal

Purity

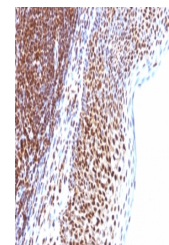
Protein G affinity chromatography

Uniprot ID

P63165

Hazard Information

This SUMO-1 antibody is available for research use only.



IHC: Formalin-fixed, paraffin-embedded h...

Dilution Range

Flow cytometry: 0.5-1ug/million cells, Immunofluorescence: 0.5-1ug/ml, Western blot: 0.5-1ug/ml, Immunohistochemistry (FFPE): 0.5-1ug/ml for 30 min at RT

Expiration Date

12 months from date of receipt.