

---

## Product Datasheet

### TG Antibody / Thyroglobulin (orb749807)

**Description**

Thyroglobulin is a 660 kDa dimeric pre-protein with


**Species/Host**

Mouse

**Reactivity**

Human

**Conjugation**

Unconjugated

**Tested Applications**

ELISA, IHC-P

**Immunogen**

Human thyroid follicular cells were used as the immunogen for the TG antibody.

**Preservatives**

0.2 mg/ml in 1X PBS with 0.1 mg/ml rAlbumin (US sourced) and 0.05% sodium azide

**Storage**

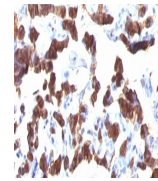
Store the TG antibody at 2-8°C (with azide) or aliquot and store at -20°C or colder (without azide).

**Note**

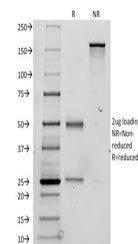
For research use only

**Application notes**

Optimal dilution of the TG antibody should be determined by the researcher.1. Staining of formalin-fixed tissues requires boiling tissue sections in pH 9 10mM Tris with 1mM EDTA for 10-20 min followed by cooling at RT for 20 min.2. The prediluted format is supplied in a dropper bottle and is optimized for use in IHC. After epitope retrieval step (if required), drip mAb solution onto the tissue section and incubate at RT for 30 min.



IHC:  
Formalin-fixed,  
paraffin-embedded  
h...



SDS-PAGE  
Analysis of  
Purified, BSA-  
Free ...

**Formula**

0.2 mg/ml in 1X PBS with 0.1 mg/ml BSA (US sourced) and 0.05% sodium azide

**Isotype**

Mouse IgG1, kappa

**Clonality**

Monoclonal

**Purity**

Protein G affinity chromatography

**Uniprot ID**

**P01266**

**Hazard Information**

This TG antibody is available for research use only.

**Dilution Range**

ELISA: 2-4ug/ml (order BSA/azide-free format), Immunohistochemistry (FFPE): 0.5-1ug/ml for 30 min at RT

**Expiration Date**

12 months from date of receipt.